

## Flower Bucket Door Hanging

### YOU WILL NEED:

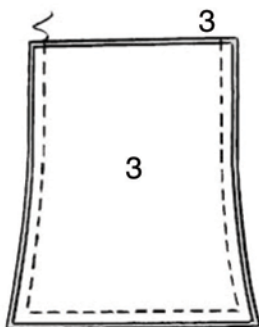
Fabric: 36" 7/8 Yard or 54", 60" or 72" 1/2 Yard  
 Contrast 1 (Upper Section): 36", 54", 60" or 72" 1/8 Yard  
 Contrast 2 (Bee Body): 4" x 4" Felt Remnant  
 Contrast 3 (Bee Stripes): 4" x 4" Felt Remnant  
 Contrast 4 (Leaves): 4 1/2" x 4" Felt Remnant  
 Contrast 5 (Small Flower): 3 1/2" x 4" Cotton Remnant  
 Contrast 6 (Large Flower): 4" x 4" Cotton Remnant

**NOTIONS:** One 3/4" Button, One Skein each of Green and Black Embroidery Floss, Raffia, 1/2 Yard of Paper Wrapped Wire, Silk Flower and Fabric Glue.

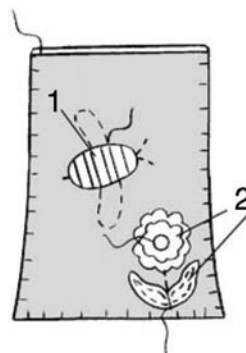
**SUGGESTED FABRICS:** Bag and Contrast 1: Fleece or Felt; Contrast 2, 3, and 4: Felt, Contrast 5 and 6: Lightweight Cotton.

### INSTRUCTIONS BRAID-TRIMMED STOCKING:

1. Prepare REMNANT 1 and REMNANT 2, cut along cutting lines, separating title, cutting information and individual sections. Pin pattern tissues to corresponding fabric remnant. Cut out individual pieces. Transfer markings.
2. Stitch FRONT and BACK 3 sections together at sides and lower edge. Remaining sections will be used as lining.

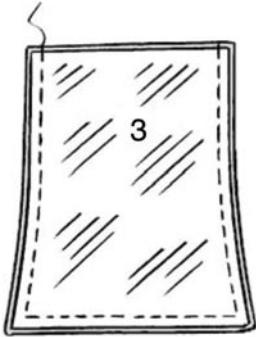


3. Turn right side out; press. Using green embroidery floss, work Blanket Stitch over sides and lower edge of bucket. Center Leaf 2 sections within placement lines on front. Work Running Stitch on stitching lines on leaves and flower stem using green embroidery floss.
4. Center large and small Flower 2 within placement lines on front. center button on flower; sew in place.



5. Using black embroidery floss, work Running Stitch along stitching lines for bee, as shown. Center Stripes 1 within placement lines on Body 1; glue in place. Trim ends of stripes evenly with body if necessary. Center body within placement lines on front; glue in place.

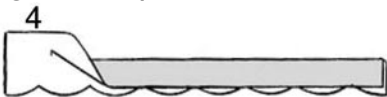
6. Stitch front and back LINING 3 sections together at sides and lower edge. Trim seam allowance close to stitching.



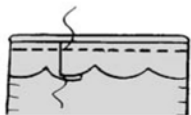
7. With wrong sides together, place lining inside bucket, matching seams. Baste raw edges together.



8. With wrong sides together, fold UPPER SECTION 4 along foldline; press.



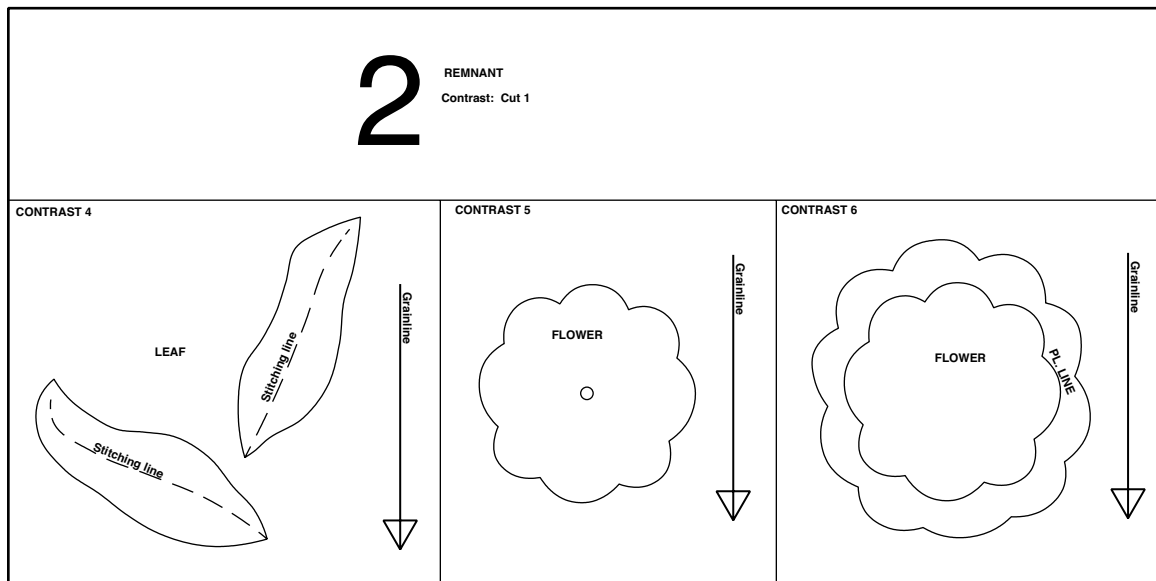
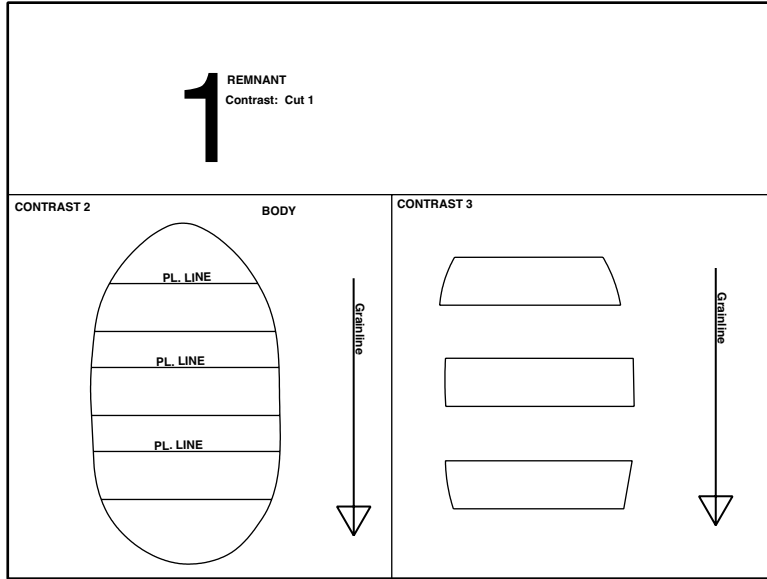
9. Encase upper edge of front and back with upper section, matching small circles and lapping ends at center back. Stitch  $\frac{3}{8}$ " (1 cm) from upper edge. Sew ends.



10. On inside, lap 2" (5cm) of ends of wire over sides of bucket, bending wire along seam; glue in place.

11. Tie several strands of raffia together in a bow. Place bow at upper left side of bucket; glue in place. Arrange silk flowers in bucket, as desired.

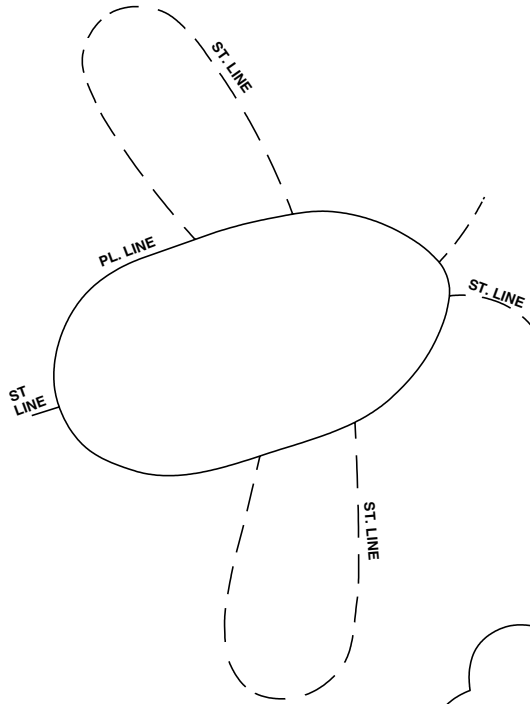




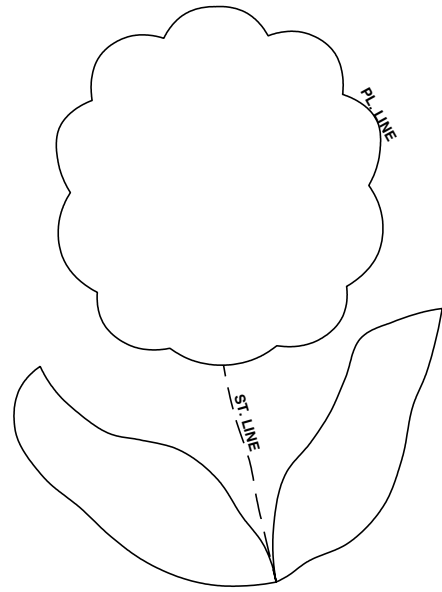
3

FRONT AND BACK  
Cut 4

LINING: 1" SEAM



LINING: 1" SEAM



LINING: 1" SEAM

Enlarge All Pattern Pieces 200%

